

Transducers

C5-2Q



2 - 7 MHz
Curved Array

C5-1Q



1 - 7 MHz
Curved Array

C5-2XQ



2 - 7 MHz
Curved Array

MC8-4Q



4 - 9 MHz
Micro - Convex Array

L12-5HQ



5 - 12 MHz
Linear Array

L12-4HQ



5 - 12 MHz
Linear Array

L17-7HQ



6 - 17 MHz
High Frequency
Linear Array

P7-3Q



3 - 7 MHz
Phased Array

P5-1XQ



1 - 5 MHz
Phased Array

P5-1Q



1 - 5 MHz
Phased Array

E10-3HQ



4 - 9 MHz
Endocavity
Curved Array

Tap the Full Potential in an Exclusive Touch

Acclarix™ AX9
Diagnostic Ultrasound System



Distinctive Design

Always Ready

- 15.6" high resolution LED monitor, 0°-180° tilt design
- 12.3" touch screen, large and responsive
- Interactive back-lighting control panel for darkroom operation
- 8 hours continuous scanning with ePower
- Compact multiple transducers connection, 3 probes connected maximum
- Configurable Cart with semi-auto height adjustment
- Flexible high-capacity storage tank & placing table

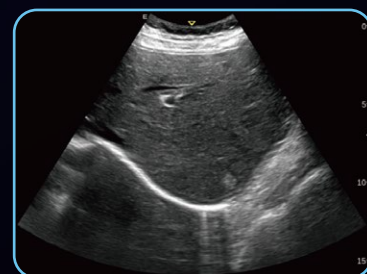
Simple but Reliable

- Magnalium alloy body aims high standard durability
- 4.8 kg light weight, compact and easy-to-go
- 2 batteries effectively extend scanning time
- About 35 seconds fast cold start and 7 seconds boot-up from sleep
- Large storage capacity for daily diagnostics



SynSight Zone Sonography Platform

- Powerful image processing hardware and high-performance beam-forming algorithm, greatly Improve contrast and lateral resolution
- Dynamic focusing on full-field, no physical focus adjustment required, excellent image uniformity, remarkable consistency and penetration



SynSight OFF

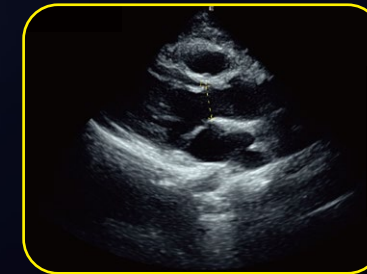


SynSight ON

Stunning Clarity

Powered by the latest SynSight zoon sonography platform, the Acclarix AX9 offers extraordinary profitability in both imaging quality and automatic solutions, combined with its portable design and simplified workflow, make it ideal for all applications. The Acclarix AX9 has been designed from the ground up with a relentless focus on delivering unexpected levels of innovation and performance at a price point that is equally surprising.

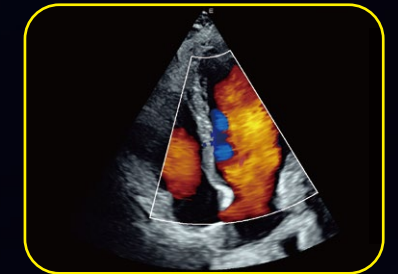
Cardiology Application



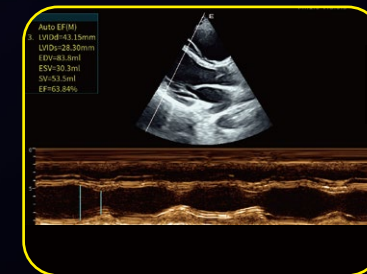
Auto LVOT-D



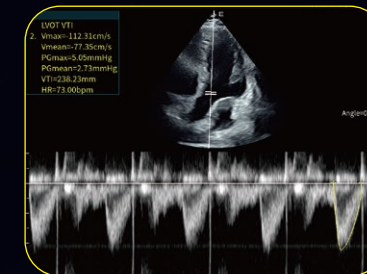
Auto EF



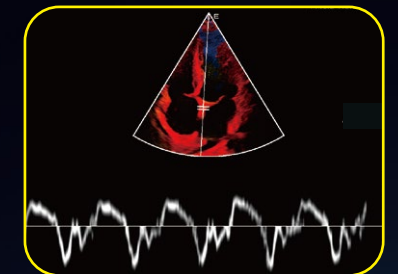
4CH View



Auto EF(M)

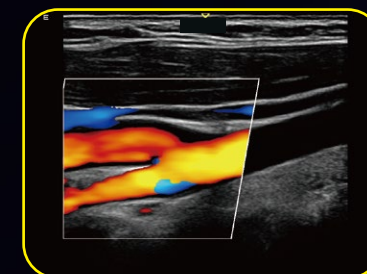


Auto VTI

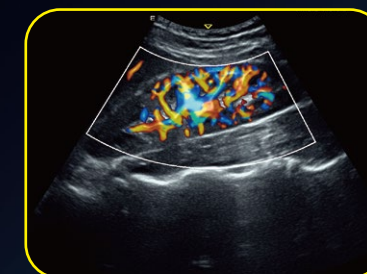


TDI

General Purpose Application



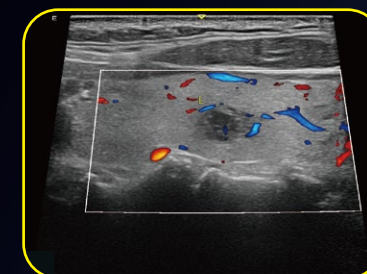
Carotid Sinus



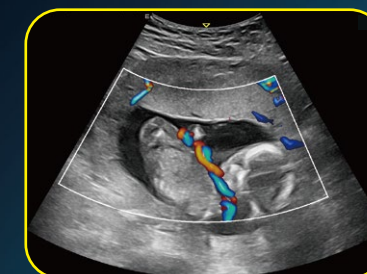
Kidney



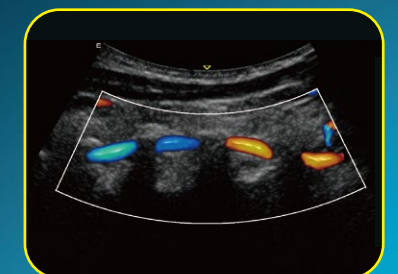
Liver



Thyroid Nodule



Umbilical Cord



Vertebral Artery